

INSRR Antibody (Center)
Purified Rabbit Polyclonal Antibody (Pab)
Catalog # AP20928a**Specification**

INSRR Antibody (Center) - Product Information

Application	WB,E
Primary Accession	P14616
Reactivity	Human
Host	Rabbit
Clonality	Polyclonal
Isotype	Rabbit IgG
Calculated MW	143720

INSRR Antibody (Center) - Additional Information**Gene ID** 3645**Other Names**

Insulin receptor-related protein, IRR, IR-related receptor, Insulin receptor-related protein alpha chain, Insulin receptor-related protein beta chain, INSRR, IRR

Target/Specificity

This INSRR antibody is generated from a rabbit immunized with a KLH conjugated synthetic peptide between 668-702 amino acids from the Central region of human INSRR.

Dilution

WB~~1:4000

E~~Use at an assay dependent concentration.

Storage

Maintain refrigerated at 2-8°C for up to 2 weeks. For long term storage store at -20°C in small aliquots to prevent freeze-thaw cycles.

Precautions

INSRR Antibody (Center) is for research use only and not for use in diagnostic or therapeutic procedures.

INSRR Antibody (Center) - Protein Information**Name** INSRR**Synonyms** IRR

Function Receptor with tyrosine-protein kinase activity. Functions as a pH sensing receptor which is activated by increased extracellular pH. Activates an intracellular signaling pathway that involves IRS1 and AKT1/PKB.

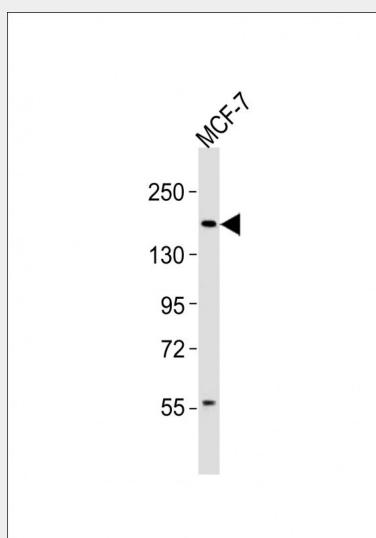
Cellular Location

Membrane; Single-pass type I membrane protein.

INSRR Antibody (Center) - Protocols

Provided below are standard protocols that you may find useful for product applications.

- [Western Blot](#)
- [Blocking Peptides](#)
- [Dot Blot](#)
- [Immunohistochemistry](#)
- [Immunofluorescence](#)
- [Immunoprecipitation](#)
- [Flow Cytometry](#)
- [Cell Culture](#)

INSRR Antibody (Center) - Images

Anti-INSRR Antibody (Center) at 1:4000 dilution + MCF-7 whole cell lysates Lysates/proteins at 20 µg per lane. Secondary Goat Anti-Rabbit IgG, (H+L), Peroxidase conjugated at 1/10000 dilution
Predicted band size : 144 kDa Blocking/Dilution buffer: 5% NFDM/TBST.

INSRR Antibody (Center) - Background

Receptor with tyrosine-protein kinase activity. Functions as a pH sensing receptor which is activated by increased extracellular pH. Activates an intracellular signaling pathway that involves IRS1 and AKT1/PKB.

INSRR Antibody (Center) - References

Haenze J.,et al.Horm. Metab. Res. 31:77-79(1999).
Gregory S.G.,et al.Nature 441:315-321(2006).
Mural R.J.,et al.Submitted (SEP-2005) to the EMBL/GenBank/DDBJ databases.
Shier P.,et al.J. Biol. Chem. 264:14605-14608(1989).
Greenman C.,et al.Nature 446:153-158(2007).